



Craven Equipment

Inspired by Adventure Built for Everyday

Bike – BSA B25/44 & Triumph TR25 1968-70

The correct rack for these bikes is an 'L4' rack

The fitting kit is designed to mount the rack to the motorcycle and also has the provision to hold panniers should you require it.

Included in the fitting kit:-

| Part Number | Quantity | Description |
|-------------|----------|---|
| 10029-54 | 2 | Bolt 3/8 BSF x 2-3/4 |
| S19-3Q | 6 | Plain washer, 5/16, stainless |
| P115 | 2 | Carrier arm / Z bracket |
| P221 | 1 | Support arm BSA B25/44 Tri TR25 left hand |
| P459 | 1 | Support arm BSA B25/44 Tri TR25 right hand |
| 118A-53Q | 2 | Spacer, stainless, 3/8x9/16x31/32 |
| P428 | 4 | Tube clamp, halves, 3/4 or 5/8 tube (2x8mm holes) |
| FA1477Q | 6 | Set bolt, M8 x 25, stainless steel |
| FA1530Q | 6 | Nyloc nut, M8, stainless |



Craven Equipment

Inspired by Adventure Built for Everyday

See 'General Fitting instructions' for step-by-step advice for fitting a rack and panniers to any machine. For advice specific to your machine, read on!

Fitting the rack:- Specific notes about your kit

Main kit

In most instances it is easier to remove the seat completely first. Then loosely fit the small tube clamps to the frame rail. Attach the bottom of the long support arm to the pillion footrest, using the pillion footrest as the 'bolt'. With the top of the arm still unfixed, offer up the rack and adjust small clamp positions as necessary to achieve the desired position for your rack. Now fix the rack to the frame rail. Remove the top shock absorber bolt and replace with our extended bolt and spacer, to hold the front of the rack (part B on Fig 1). Once loosely in position, fix bolts through the Z brackets and through the slotted ski on the bottom of the rack, see fig 1. Now tighten up all nuts keeping the rack level as you go.



Craven Equipment

Inspired by Adventure Built for Everyday

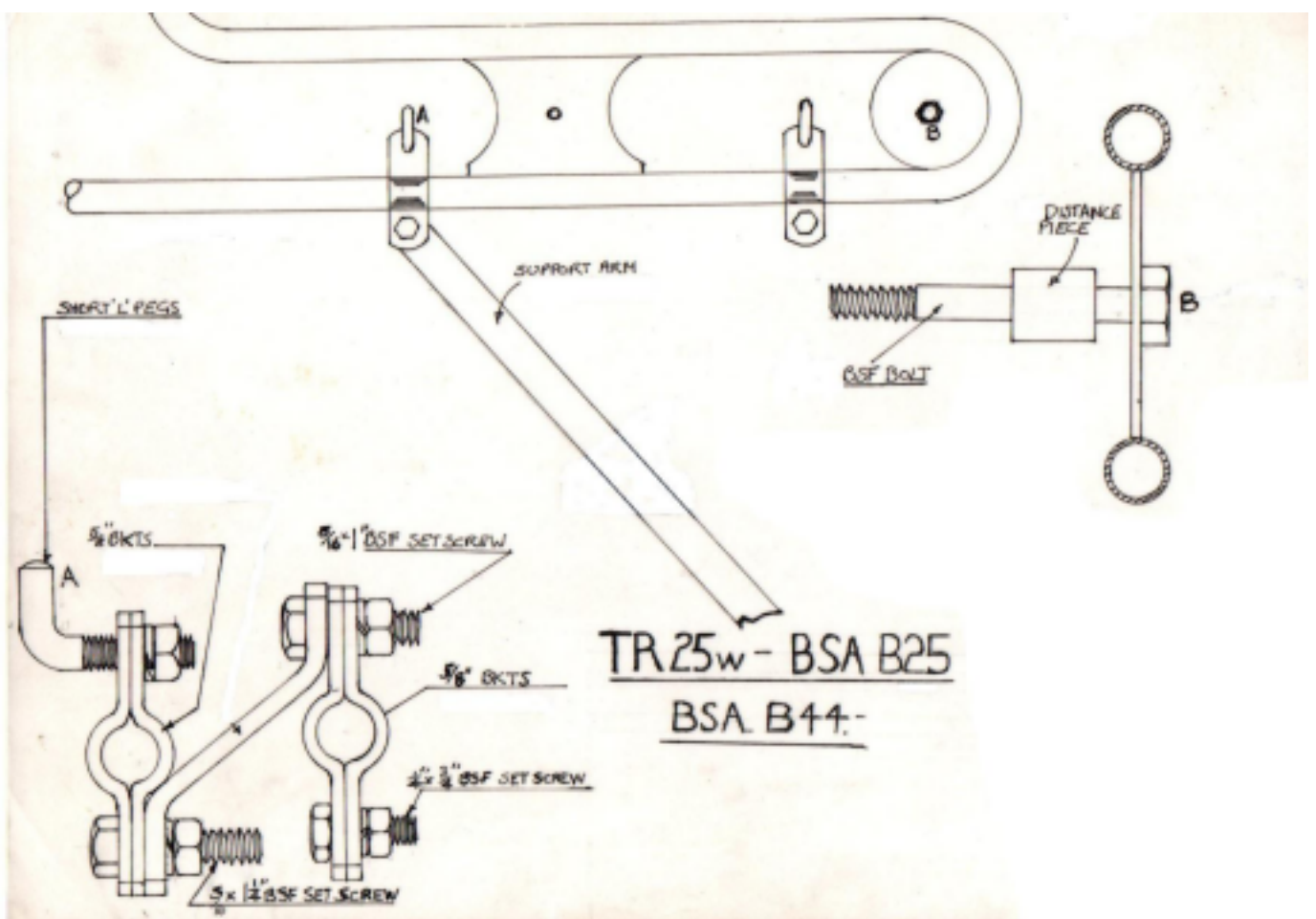


Fig. 1